

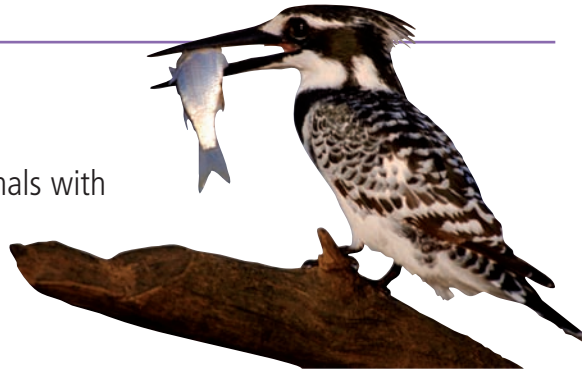
3 Classifying animals

AN AMAZING ANIMAL

Do you know?

Animals are an essential part of life on the Earth.

Some provide us and other animals with food. Some provide us with materials to make clothes. Some help us in our work and some give us company.



1 How can we protect animals? In your notebook copy the right answers.

- Catch fish when they are small.
- Look after our pets.
- Touch birds' nests.
- Protect endangered species.

2 Which of these things should you never do? Explain why.

a)



b)

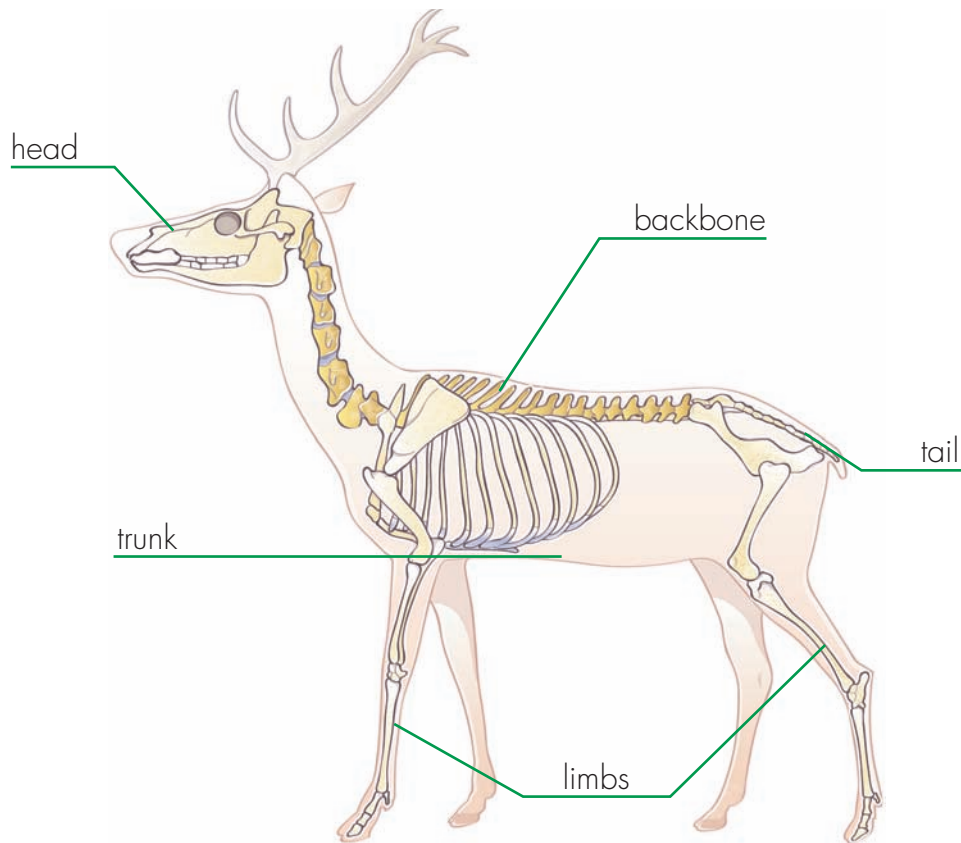




1 What is a vertebrate?

3.1

Vertebrates have a skeleton inside them. An important part of this skeleton is the **backbone**. Most vertebrates have a **head**, a **trunk**, **limbs** and a **tail**.



Some vertebrates, like frogs, don't have a tail and others, like snakes, don't have limbs.



frog



snake

What do vertebrates eat?

Not all vertebrates eat the same food.



Some, like rabbits, only eat plants. They are **herbivores**.



Some, like lynxes, only eat other animals. They are **carnivores**.



Some, like bears, eat plants and animals. They are **omnivores**.

1. Pronunciation.  3.2 Listen and repeat.  3.3 Say the repeated word.

vertebrate	backbone	head	trunk	limbs
herbivore	carnivore	omnivore		

2. In your notebook draw a vertebrate and label the head, the limbs, the trunk, the tail and the backbone.
3. Copy and complete the table with *omnivore*, *herbivore* and *carnivore*.



This animal eats plants.




This animal eats other animals and plants.



This animal eats only other animals.

sheep	pig	lion

4.  3.4 Quiz: check your learning.