

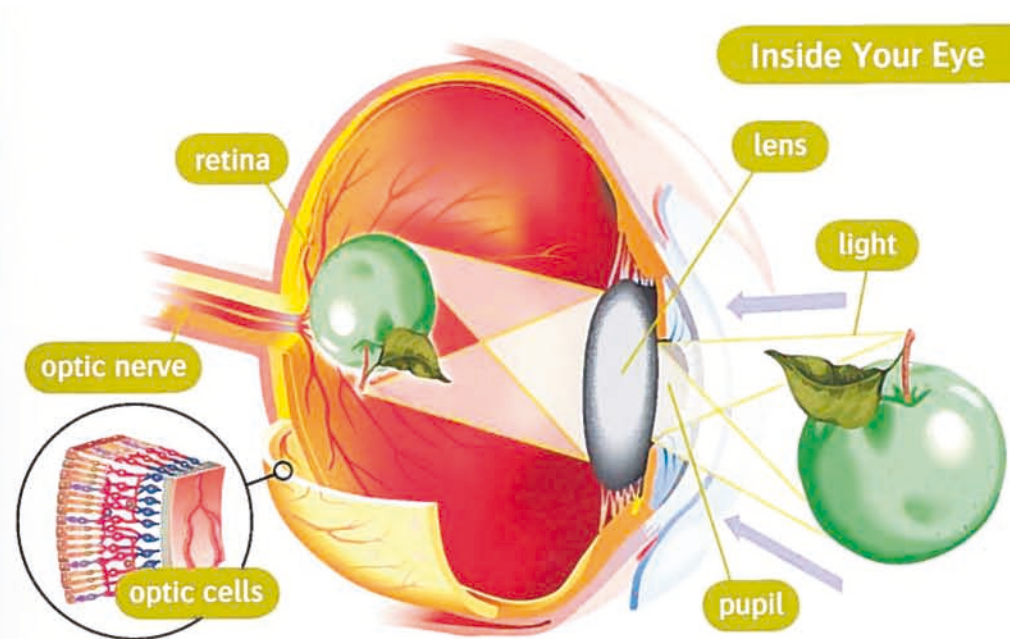
# 2

## A Closer Look



Look at one of your eyes in a mirror. The white part is the sclera and the colored part is the iris. The small black spot in the center is the pupil. The pupil is a hole that lets light into the eye. When it's dark, your pupils open to let more light in.

Your eyelids and eyelashes protect your eyes from dust and dirt. Your eyelids also keep light out.



Light reflects off an object. The light then enters the eye and goes through a lens. This lens focuses the light on the retina at the back of the eye. It makes a picture of the object on the retina.

The retina has millions of optic cells. They detect light and colors. The optic nerve collects the information and takes it to the brain.



Cameras have lenses, too. What other things have lenses?



→ Go to pages 26–27 for activities.