




4. Listen and circle.  001

/8 marks



Total for test _____ / 22 marks

How do you feel? Circle, write and draw.

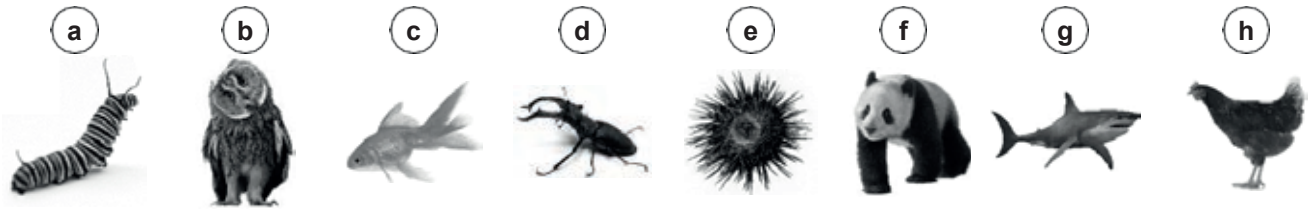
happy OK sad

I feel _____ about my test.

Name _____ Date _____

1. Read and circle.

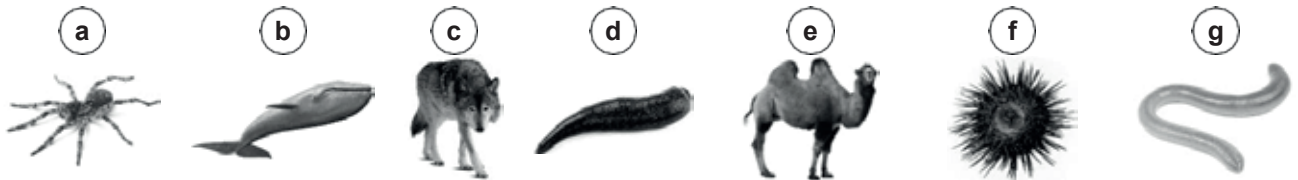
/8 marks



- a. It's a **vertebrate** / **invertebrate**.
- b. Is it a **reptile** / **bird**? Yes, it is.
- c. It's **cold-blooded** / **warm-blooded**.
- d. It doesn't have **backbone** / **exoskeleton**.
- e. It's an **arthropod** / **echinoderm**.
- f. Is it a **carnivore** / **herbivore**? Yes, it is.
- g. It uses **lungs** / **gills** to breathe.
- h. Is it **viviparous** / **oviparous**? No, it isn't.

2. Read and write *true* or *false*.

/7 marks



- a. It has got six legs.

- b. It gives birth to live babies.

- c. It's a carnivore.

- d. It's a parasite.

- e. It can survive for a long time with no water.

- f. It's a smooth mollusc with a hard shell.

- g. It's a reptile with no legs.

Total _____ / 15 marks